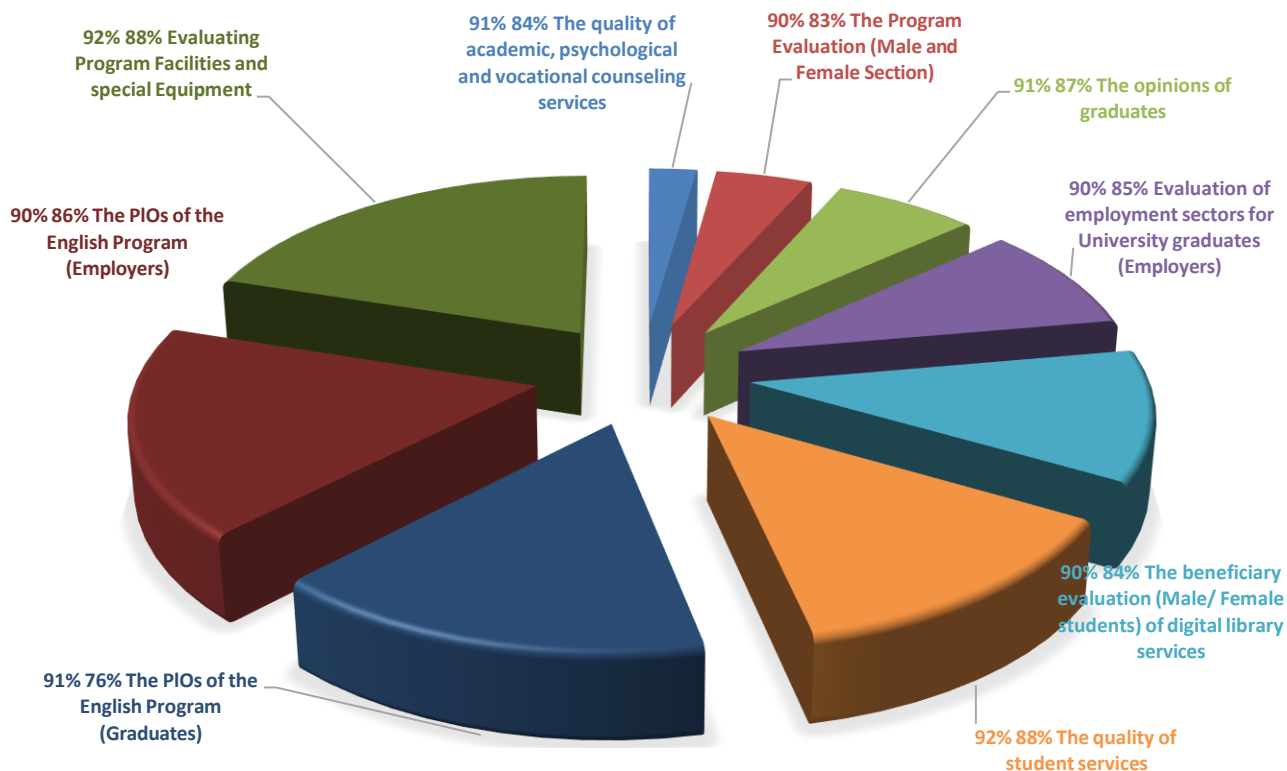


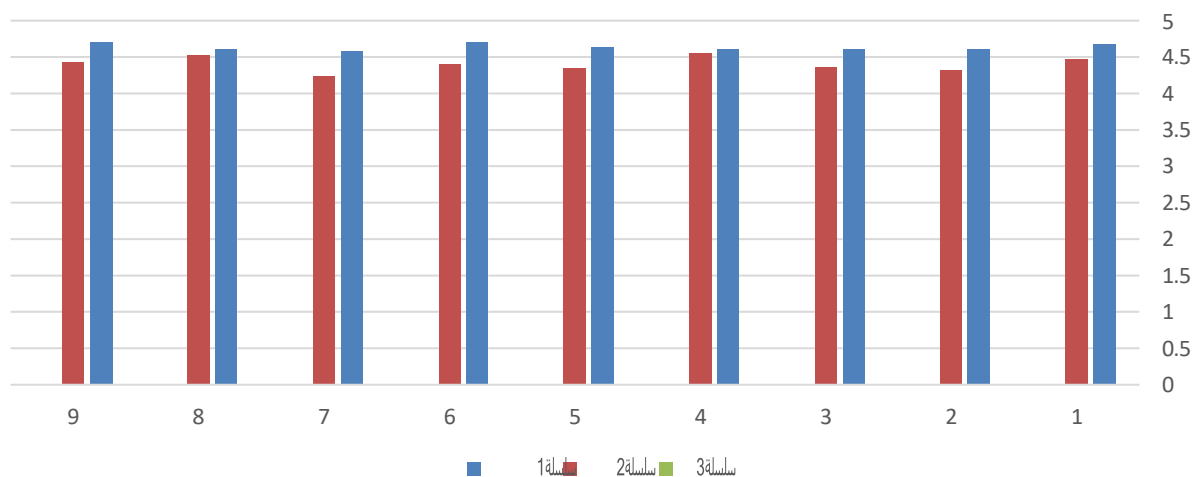
Students' Feedback Surveys (1446 & 1445)

No	Survey Title	1445		1446	
		100 %	Average /5	100 %	Average /5
1	The quality of academic, psychological and vocational counseling services	84 %	4.47	91%	4.67
2	The Program Evaluation	83%	4.32	90%	4.60
3	The opinions of graduates	87%	4.36	91%	4.61
4	Evaluation of employment sectors for University graduates (Employers)	85%	4.55	90%	4.60
5	The beneficiary evaluation (Male/ Female students) of digital library services	84%	4.35	90%	4.63
6	The quality of student services	88%	4.40	92%	4.70
7	The PIOs of the English Program (Graduates)	76%	4.24	91%	4.58
8	The PIOs of the English Program (Employers)	86%	4.53	90%	4.60
9	Evaluating Program Facilities and special Equipment	88%	4.43	92%	4.70

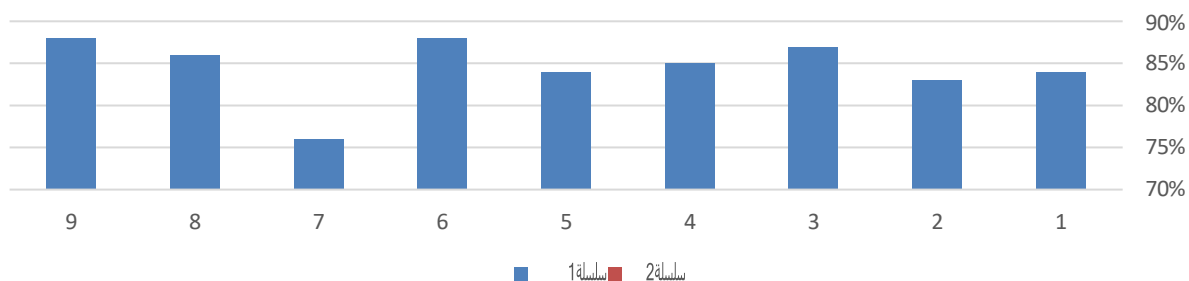
STUDENTS' FEEDBACK SURVEYS – SUMMARY FOR 1446 & 1445



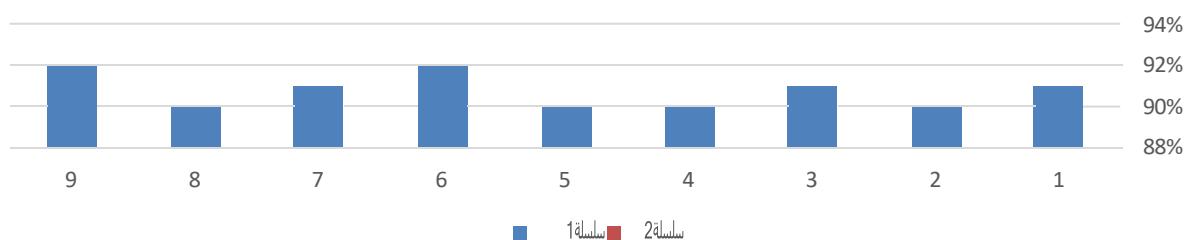
Average of Students' Feedback Surveys – Summary (1446 & 1445)



STUDENTS' FEEDBACK SURVEYS – SUMMARY FOR 1445



STUDENTS' FEEDBACK SURVEYS – SUMMARY FOR 1446



STUDENTS' FEEDBACK SURVEYS – SUMMARY FOR 1445 & 1446

